



Your Partner for
**Premium Acrylic &
Signage Materials**



PT GLAS® CAST ACRYLIC SHEET



UL Certified Acrylic Sheets

COMPANY INTRODUCTION

PT GLAS® represents the premium standard in cast acrylic engineered for professionals who demand clarity, consistency and long-term reliability.

Every sheet is UL-certified, ensuring compliance with international safety standards and delivering confidence in safety-critical and performance-driven applications.

Production is governed by rigorous quality control at every stage, with individual sheet inspection to ensure uniform thickness, optical purity, and stable color.

Each sheet carries a unique lot number for complete traceability and quality tracking.

PRODUCT RANGE



- Clear & Color Series
- Frosted Series
- LED Series
- Metallic Shimmer Series



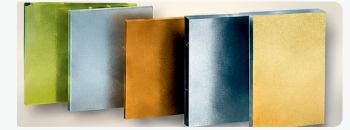
- Cast Acrylic Mirrors
- Glow-in-the-dark Series
- Day-Night Series
- Pearlescent Series



Day-Night Series



Cast Acrylic Mirrors



Metallic Shimmer Series



LED Blocks



Double-sided Frosted Sheets



In Daylight



In the Dark

100% VIRGIN MMA CAST ACRYLIC SHEETS

UL CERTIFIED

PT GLAS® cast acrylic sheets are UL certified for safety and global standard.

PREMIUM QUALITY

Superior grade with excellent optical clarity, strength and weather resistance.

COST EFFECTIVE

Provides a cost-effective solution for diverse applications across multiple industries.

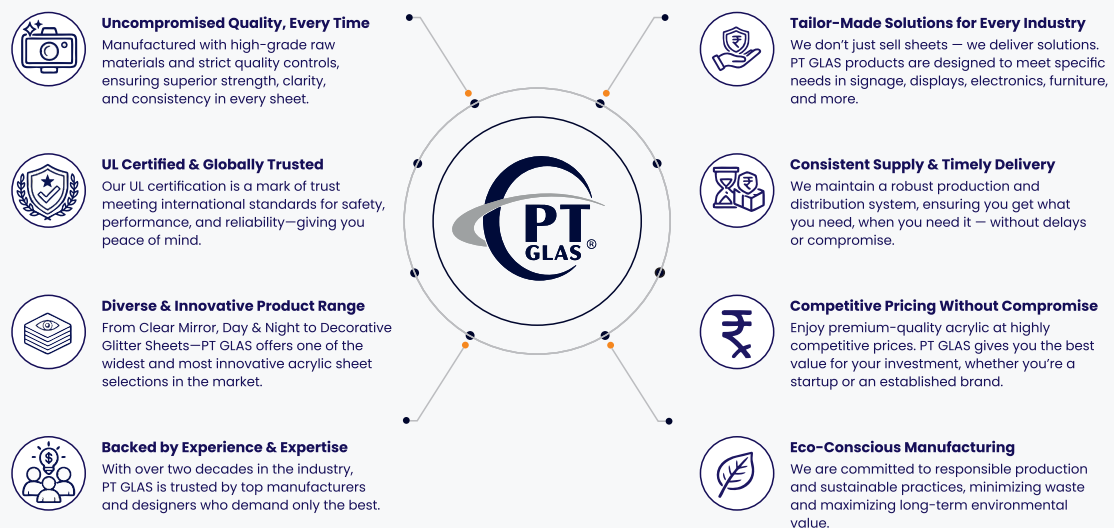
TRUSTED GLOBALLY

Widely known in the industry and trusted by leading manufacturer worldwide.

WHY CHOOSE PT GLAS®

- High Quality Raw Material**
Manufactured using 100% virgin MMA for superior performance.
- Excellent Clarity**
High light transmission with brilliant optical clarity.
- Weather & UV Resistant**
Outstanding resistance to yellowing and outdoor conditions.
- Easy to Fabricate**
Can be cut, drilled, routed, polished and thermoformed with ease.
- Wide Range of Applications**
Ideal for signage, displays, lighting, architecture, furniture and more.

WHY PT GLAS® STANDS OUT



ENGINEERED FOR DESIGN FLEXIBILITY

PT GLAS® is available in a wide spectrum of colors, finishes, and effects—combining premium performance with exceptional design versatility. Ideal for signage, retail displays, architectural interiors, and custom fabrication, it ranges from crystal-clear transparency to vivid solids and refined frosts.



ADVANCED TECHNOLOGY

Fully computerized system for precise monitoring and consistent quality.



MODERN MACHINERY

State-of-the-art equipment for precision and high performance.



SKILLED WORKFORCE

Highly trained professionals ensuring strict quality control at every step.